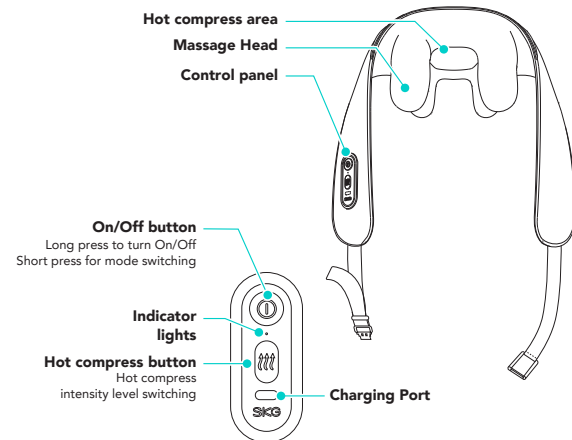


Enjoy the Power-on Experience



Charging/Power Instructions

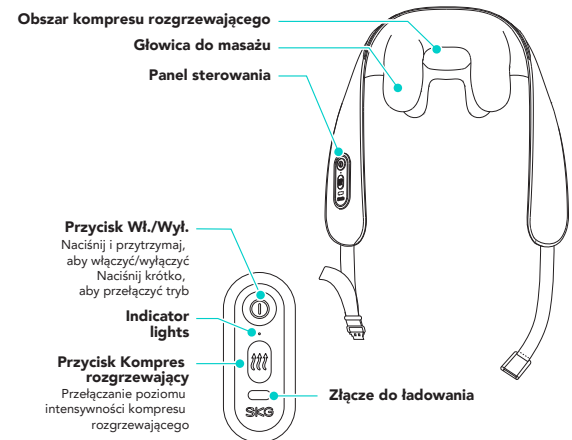
Light Color	Indicator status	Description
Blue light	Constantly on	Battery level >25%
Orange light	Constantly on	Battery level <25%
Orange light	Breathing	Battery charging
Blue light	Breathing	Full battery

Basic Product Parameters

Product Name	Neck&Shoulder Massager		
Model	H5-E	Rated Input Voltage	5V m
Battery Capacity	2000mAh/14.8Wh	Rated Input Power	10W

USER MANUAL

Ciesz się funkcjonalnością naszych produktów!



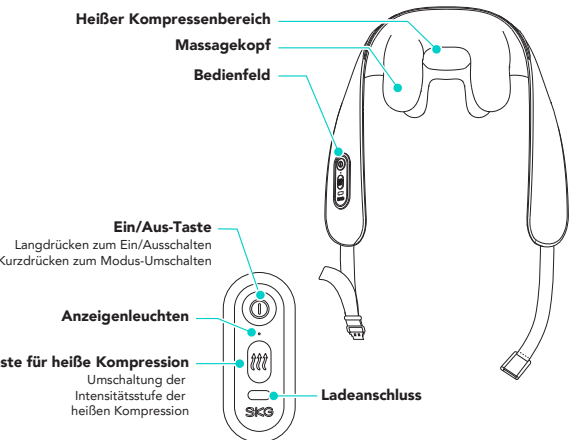
Instrukcja ładowania/zasilania

Kolor światła	Status światła	Opis
Światło niebieskie	Świeci się	Poziom naładowania akumulatora > 25%
Światło pomarańczowe	Świeci się	Poziom naładowania akumulatora < 25%
Światło pomarańczowe	Odrycha	Ładowanie akumulatora
Światło niebieskie	Odrycha	Akumulator naładowany

Podstawowe parametry produktu

Nazwa produktu	Masażer szyi i ramion		
Model	H5-E	Znamiennowa napięcie ładowania	5V m
Pojemność akumulatora	2000mAh/14.8Wh	Znamiennowa moc wejściowa	10W

Genießen Sie das Erlebnis beim Einschalten



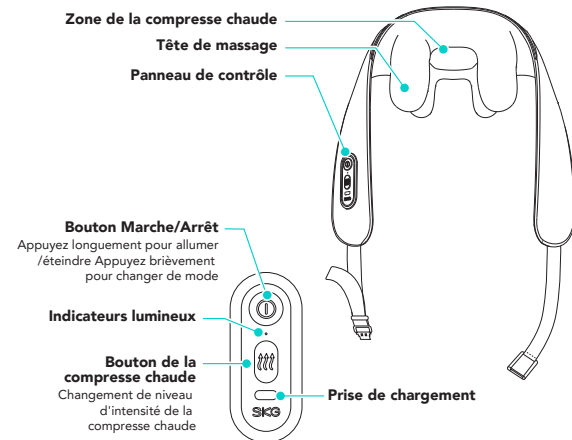
Anweisungen zum Aufladen/Stromversorgung

Farbe der Anzeigenleuchte	Anzeigenstatus	Beschreibungen
Blaues Licht	Dauerhaft eingeschaltet	Akkustand >25%
Orangefarbendes Licht	Dauerhaft eingeschaltet	Akkustand < 25%
Orangefarbendes Licht	Atmung	Aufladen des Akkus
Blaues Licht	Atmung	Volles Akku

Grundlegende Produktparameter

Produktname	Nacken- und Schultermassagergerät		
Modell	H5-E	Nennladespannung	5V m
Akkuleistung	2000mAh/14.8Wh	Eingangsnennleistung	10W

Profitez de l'expérience de mise en marche



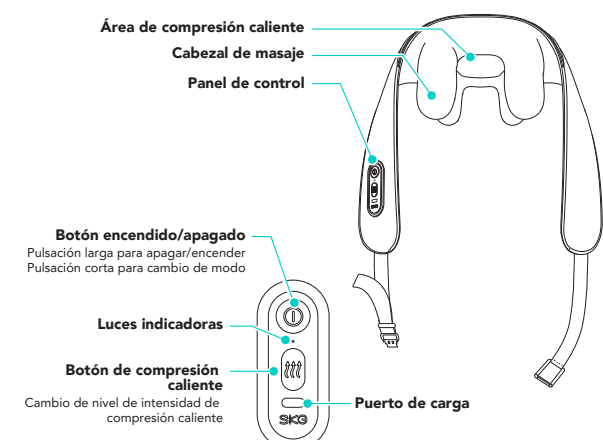
Instructions de charge et d'alimentation

Couleur de la lumière	État de l'indicateur	Description
Lumière bleue	Constante	Niveau de la batterie >25 %
Lumière orange	Constante	Niveau de la batterie <25 %
Lumière orange	La lumière clignote progressivement et lentement	Chargement de la batterie
Lumière bleue	La lumière clignote progressivement et lentement	Batterie pleine

Paramètres de base du produit

Nom du produit	Masseur cou - épaule		
Modèle	H5-E	Tension nominale de charge	5V m
Capacité de la batterie	2000mAh/14.8Wh	Puissance nominale en entrée	10W

Disfruta de la experiencia al encenderlo



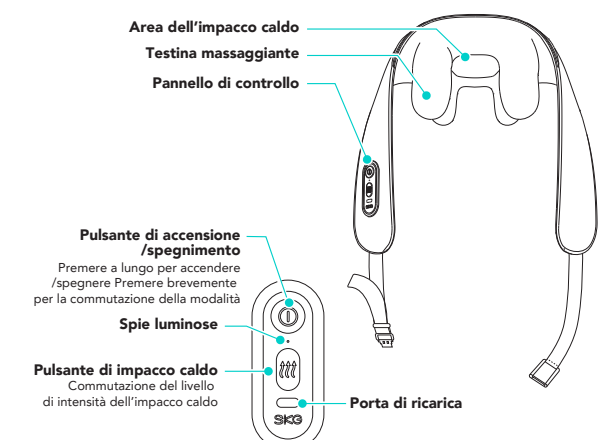
Instrucciones de carga/encendido

Color de luz	Estado de la luz	Descripción
Luz azul	Color fijo	Nivel de batería > 25 %
Luz naranja	Color fijo	Nivel de batería < 25 %
Luz naranja	Respiración	Batería cargando
Luz azul	Respiración	Batería al completo

Características básicas del producto

Nombre del producto	Masaajador de cuello y hombro		
Modelo	H5-E	Entrada de carga nominal	5V m
Capacidad de batería	2000mAh/14.8Wh	Potencia de entrada nominal	10W

Godetevi un'esperienza che vi dà la carica



Istruzioni per la ricarica e l'alimentazione

Colore dell'indicatore	Stato dell'indicatore	Descrizioni
Luce blu	Accesso fisso	Livello della batteria >25%
Luce arancione	Accesso fisso	Livello della batteria <25%
Luce arancione	Lampeggiante	Ricarica della batteria
Luce blu	Lampeggiante	Batteria completamente carica

Parametri di base del prodotto

Nome del prodotto	Masaajatore collo e spalla		
Modello	H5-E	Ingresso di carica nominale	5V m
Capacità della batteria	2000mAh/14.8Wh	Potenza nominale in ingresso	10W

Operating Environmen

	Operating environment	Storage and transport
Temperature range	0°C - 35°C	-20°C - 50°C
Humidity range	15% - 90%RH	0% - 90%RH
Atmospheric pressure	70KPa - 106KPa	70 KPa - 110KPa

Product Disposal Precautions

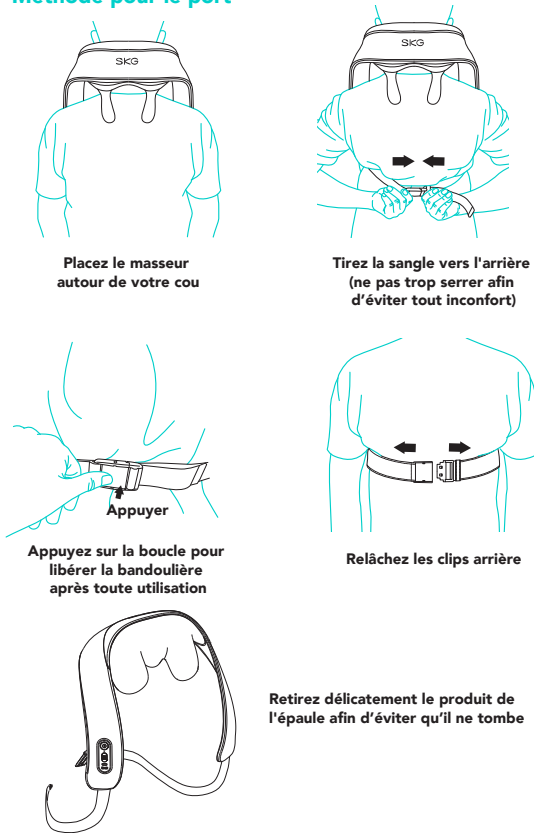
Please support the recycling of rechargeable batteries (lithium-ion batteries)

- This product's battery is a dedicated rechargeable battery that should not be used in other products. Do not charge the battery once it has been removed.
 - Do not throw into the fire or expose to excessive heat.
 - Do not puncture with nails, subject to heavy impact, or disassemble.
 - Do not directly connect the battery's positive and negative terminals with metal.
 - Do not store it with necklaces, hairpins, etc.
 - Do not charge, use, or store in high-temperature locations such as near a stove or under direct sunlight.
 - All of the abovementioned scenarios can result in overheating, fire, or bursting.
- Danger**
- Place the removed rechargeable battery out of the reach of infants to prevent accidental ingestion.
 - If swallowed, seek medical attention immediately.
 - If battery leakage occurs, do not touch the liquid with bare hands. Follow the safety instructions below.
 - There is the risk of blindness if battery fluid contacts the eyes. Do not rub the eye with your hands. Rinse with clean water immediately and seek medical attention. If battery liquid gets on the body or clothing, it may cause skin inflammation or injury. Rinse with clean water, and if discomfort persists, seek medical attention immediately.
 - Disassembly is only permitted when the product is being discarded. Failure to comply may result in fire, electric shock, injury, or other accidents. Please contact the retailer where you purchased the product for repairs (except battery replacement).
- Warning**
- The lithium-ion battery used in this product is a valuable recyclable resource. Please hand it over to a professional organization capable of recycling rechargeable batteries before disposal. Before discarding the appliance, the battery must be removed, and the appliance must be unplugged. Dispose of the battery safely.
- Removal Steps:**
- Please open the non-button plastic shell using professional tools.
 - Disconnect the battery terminal leads.
 - Remove the battery.

Precautions

- Never use with the following medical electronic devices to avoid impact and the consequential injury.
 - implantable electronic medical devices such as cardiac pacemakers.
 - Electronic medical devices for life support, such as artificial heart-lung machine.
 - Electronic medical devices such as electrocardiographs.
 - Do not use the massager in the petrol stations, highly dusty workshops, gas stations and other flammable and explosive facilities.
 - This product is not a medical device. It does not have the function of diagnosing and treating neck diseases. Patients with neck diseases shall consult a doctor to avoid delaying the treatment of the disease.
 - Do not use this product in driving, rock climbing or other dangerous movements as this may cause an accident.
 - The hot compress time of this product should not exceed 20 minutes at a time, otherwise there is a risk of low-temperature burns. Do not use it in sleep or without full consciousness. For users insensitive to heat, please use a lower intensity level of hot compress and strictly control the use time.
 - People with circulatory disorders such as cerebrovascular diseases, inflammation of the neck skin, redness and swelling, suppurative, and cervical spondylitis are prohibited to use the product, otherwise it may cause the aggravation of symptoms.
 - The elderly over 70 are prohibited to use the product. The skin of the elderly over 65 is fragile with insensitive nerve endings. Please select a lower intensity level and strictly monitor the use time when using this product.
 - Please gradually increase the intensity level of massage from a lower level based on your personal feelings, otherwise it may cause muscle strain due to the stimulation and discomfort of the higher level.
- Warning**
- This product is a personal care massage product and is not intended to replace pharmaceuticals and medical devices.
 - Children, pregnant women, and women in the menstrual period are prohibited to use during the product contains a lithium battery, please do not place in high temperature environment.
 - Users with sensitive skin, facial allergic dermatitis, facial parts with plastic materials shall use this product under the guidance of a doctor.
 - Users with skin allergies to metals and hot compresses must take care when using.
 - This product has a heating function, and users who are insensitive to heat shall take care when using.
- Note**
- In case of any discomfort during use, please stop using the product immediately.
 - Do not disassemble the product yourself.
 - Do not remove or replace the battery yourself.
 - If there is a cervical spine injury, consult your healthcare professional if this product can be used.
 - The product has a heating surface, and users who are insensitive to heat shall take care when using this product.
 - Please use in normal operation environment: temperature: 0°C - 40°C; relative humidity: < 80%RH, non-condensing; atmospheric pressure: 50Kpa - 106Kpa
 - Please select normal transportation and storage conditions: ambient temperature range: -20°C - + 55°C; relative humidity range: ≤ 95%RH, non-condensing; atmospheric pressure: 50Kpa - 106Kpa.
 - This product contains a lithium battery. Do not disassemble, modify, immerse in water or throw it in fire, otherwise the product may be damaged and explode.
 - Do not compress the heart during use, as this may cause accidents or physical discomfort.
 - Do not use with medical devices or more than 2 sets of this product at the same time, as this may cause nausea or physical discomfort.
 - Do not use for the purposes other than those described in the user manual, otherwise accidents may occur.
 - Do not disassemble, repair or modify the product without prior authorization, as this may cause malfunctions or electric shocks.
 - For a better experience, do not pull /lean on the product.
- In the following cases, please consult your doctor before use. Failure to do so may result in accidents or physical discomfort:**
- Patients who are being treated by a doctor and feel abnormal
 - Patients with infectious diseases
 - Patients with cardiac and brain nerve abnormalities
 - Patients with impaired skin perception or abnormal skin
 - Patients with a temperature of more than 38 degrees (fever period)
 - Patients who are taking medication
 - Patients with abnormal blood pressure
 - Patients who are not free to express themselves
 - Patients with a high level of peripheral circulatory dysfunction caused by (e.g.) diabetes
 - Patients with acute paralysis
 - Patients with metal implant
 - Patients with coagulopathy
 - Eyes
 - People with severe cognitive impairment
 - Patients with spastic after a cerebrovascular accident
 - People with unclear consciousness and deformity of limb bone and joint contracture

Méthode pour le port



CE This device is in compliance with the essential requirements and other relevant provisions of Directive 2014/35/EU. CAUTION - RISK OF EXPLOSION IF BATTERY IS REPLACED BY AN INCORRECT TYPE. DISPOSE OF USED BATTERIES ACCORDING TO THE INSTRUCTIONS EU Compliance Statement.

EU Compliance Statement: SKG Health technology Co., Ltd. Here by declares that this device is in compliance with the essential requirements and other relevant provisions of the Directive 2014/35/EU. A copy of the EU Declaration of Conformity is available online at <https://www.skg.com/pages/skg-declaration-of-conformity>.

Old electrical appliances must not be disposed of together with the residual waste, but have to be disposed of separately. The disposal at the communal collecting point via private persons is for free. The owner of old appliances is responsible to bring the appliances to these collecting points or to similar collection points. With this little personal effort, you contribute to recycle valuable raw materials and the treatment of toxic substances. Caution:

- If you experience skin irritation when using the body massager, please refrain from using it, and wait two to three days to see if your symptoms ease. If symptoms persist or worsen, please consult a physician.
- If you have eczema, allergies or asthma, you may be more likely to experience a skin irritation or allergy from using the massager.
- The appliance it must only be supplied at safety extra low voltage corresponding to the marking on the appliance.
- This appliance can be used by children aged from 8 years and above and persons with reduced physical, sensory or mental capabilities or lack of experience and knowledge if they have been given supervision or instruction concerning use of the appliance in a safe way and understand the hazards involved.
- Children shall not play with the appliance.
- Cleaning and user maintenance shall not be made by children without supervision.

Cleaning and Maintenance

- Main Unit Care
 - Fabric care should be taken of the main unit; clean it by wiping with a soft cloth.
- The fabric area does not support washing with water. When cleaning and maintenance are needed, please use alcohol to sanitize and remove sweat stains or wipe with a clean damp towel.

